

THE PTS POST

NEWSLETTER

IT'S TIME TO SHINE

HELP US PAVE THE WAY



HELLO!

IT'S TIME TO SHINE!

There's tremendous momentum for Path To Shine®, Inc. as we race towards our 13th year of mentoring elementary school children to foster their dreams. The time to act is NOW so that we can ensure solid footing for our continued evolution as an organization. We hope you will consider supporting our year-end fundraising efforts so that this important work may continue.



Make a donation at www.pathtoshine.org/donate

The next year is crucial for Path To Shine, and we have some huge developments in the works. In October, we officially kicked off our newest partnership with Cobb County Schools. Our Kennesaw program is overseeing this first PTS-Cobb County collaboration; they will be working closely with Marie at PTS-HQ to assess and adapt our current program model, establishing a clear and effective protocol that will pave the way for over 60 additional PTS programs in elementary schools within the Cobb County School District. This is just one of the many great opportunities that we can (and will) pursue now that we've solidified our stand-alone 501(c)(3) nonprofit status.

This next year will also see the roll-out of our new Mentor Portal. In August, all of the Affiliate Directors who oversee our various locations attended a workshop where we gathered priceless insight. We had candid discussions about the facets of mentoring with PTS that bring us joy while highlighting the areas that create hardships and frustrations for our mentors. We also had a first look at the new Mentor Portal and compiled a "wish list" of the tools and resources that will soon be available to our dedicated mentors. As we continue to strategize and expand our reach, we're confident this portal will streamline things for our mentors, giving them more time to focus on what's most important...MENTORING MORE AMAZING CHILDREN!



THE NUMBERS DON'T LIE

MENTORED YOUTH OUTPACE THEIR PEERS IN NUMEROUS AREAS

MENTORED YOUTH ARE 55% LESS LIKELY TO SKIP A DAY OF SCHOOL

MENTORED YOUTH ARE 78% MORE LIKELY TO VOLUNTEER REGULARLY

90% OF MENTORED YOUTH ARE MORE INTERESTED IN BECOMING A MENTOR

MENTORED YOUTH ARE **130%** MORE LIKELY TO HOLD LEADERSHIP POSITIONS

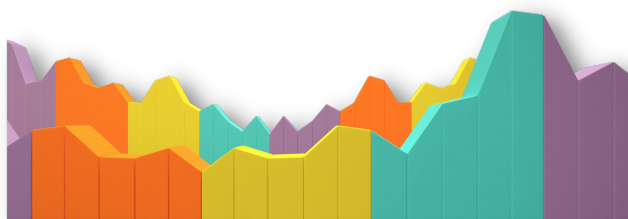
81% MORE LIKELY TO PARTICIPATE IN EXTRACURRICULAR ACTIVITIES

46% LESS LIKELY TO USE ILLEGAL DRUGS AND **27%** LESS LIKELY TO START DRINKING

MENTORED YOUTH FACING OPPORTUNITY GAPS ARE **55%** MORE LIKELY TO ENROLL IN HIGHER EDUCATION

Source: MENTORING.ORG

MENTOR National is one of the many organizations we're working with to expand Path To Shine's reach. We are now included in MENTOR'S vast network of mentoring organizations across Georgia. This will amplify our visibility across the State, connecting us with individuals looking to mentor and groups seeking to launch new programs in communities that will benefit from our mentorship.



PTS - Kennesaw is helping Path To Shine venture into uncharted territory for our organization! We're so grateful for their commitment to spearheading our first collaboration with Cobb County Schools. Partnering with school systems brings a new set of challenges, but our Kennesaw program hasn't skipped a beat. Flexibility continues to be one of Path To Shine's biggest selling points. We are uniquely equipped to adapt and evolve so that we can serve larger school systems while maintaining the integrity of our curriculum and mentor/child partnerships that make PTS special. PTS-Kennesaw serves as an exciting glimpse of the new horizons we are aiming for at Path To Shine, Inc.

Join us in congratulating this wonderful group! Keep putting the #SHINE in Path To Shine, PTS-Kennesaw!

**A MESSAGE FROM OUR
EXECUTIVE DIRECTOR,**

Marie B. Davis



2022 has been an incredible year for our organization, and I want to thank you personally for making it possible. Your support and generosity launched Path To Shine, Inc. through its first year as a separate 501(c)(3) nonprofit organization. Although Path To Shine has been in operation for twelve years, the work that can be accomplished as a recognized nonprofit is beyond imagination. Your generosity allowed us to reach beyond the challenges of a complicated changeover with leadership and legal changes to continue to pour our full effort and heart into serving children who benefit from free meaningful mentorship.

Last year, I asked you to walk with us through the next phase of Path To Shine, Inc. With my deepest gratitude, I thank you for living up to the task! As we close out another fantastic year together, I again ask that you

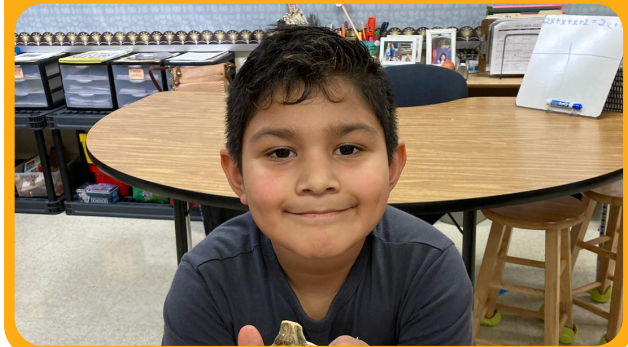
continue to journey with us by supporting our year-end campaign. Watch the great things that will happen when a program has a great foundation and launches forward in a big way!

Sincerely thankful,

Marie B. Davis

Marie B. Davis, Executive Director

Here's a look at PTS-Kennesaw



Path To Shine depends on the generosity of supporters just like you to continue our mission of **MENTORING ELEMENTARY SCHOOL CHILDREN TO FOSTER THEIR DREAMS.**

VISIT pathtoshine.org/donate
& show your support.

Your contribution today paves the way for more success stories tomorrow.

Help us put the #SHINE in Path To Shine!

